

1. Find two suitable mounting points where nothing is likely to interrupt the beam's path and there is good sunlight for the solar panels.

The emitter and transmitter enclosures can be up to 50 meters apart and mounted at approx 800mm or hip height above ground.

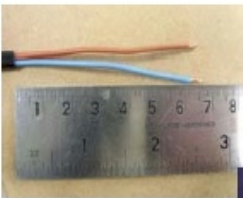
Make sure low-angle sunlight will not enter the 'eye' of the transmitter. Locate the transmitter where it has the clearest line of sight to the house.



3. Mount the solar panels facing skywards at least 180mm away from the transmitter antenna.

**IMPORTANT** – Angle the solar panel to achieve the best sunlight in Winter months. A tilt will also keep the surface free of dust.

Fasten the solar panels using the self-tapping screws supplied. Shorten the cable if required and use the clips supplied to tidy and secure the cable.



2. The mounting brackets have multiple screw holes to allow the enclosure to be angled and set back behind a fence post or wall to aid concealment and alignment.

Use an 8mm socket with extension and ratchet to fasten the main bracket with the self-tapping screws supplied. Lightly tighten the swivel mounting screws to aid alignment, tighten fully when correctly aligned.



4. Remove the enclosure front cover.

With the battery removed, strip the solar panel wires as illustrated and feed inside the enclosure through the cable gland.

Connect the blue and brown wires to correct coloured terminals on the circuit board using a small flat blade screwdriver.

Make sure there is a sufficient length of cable left inside to be able to insert the battery so it doesn't obstruct the path of the beam.



6. Check alignment of the beam by gradually blocking the detection window of the transmitter with a card. First, from left to right then from right to left.

When the window is blocked sufficiently, the green LED will illuminate signifying an alert.

The beam is correctly aligned when an alert occurs with the same proportion of window is still exposed from each side.

Adjust both the transmitter and emitter where necessary by swivelling the enclosure on the bracket then re-tightening the screws.



8. The beam transmitter is pre-coded to the receiver and should work as soon as the receiver is switched on and the beam is broken. Walk through the beam several times to test the system.

5. Connect the battery of both enclosures making sure it is seated at the bottom of the enclosure.

Fit the correct front covers turning each plastic screw a few turns at a time so the cover seats evenly.

Lightly tighten each screw to complete the waterproof seal.



7. Fasten the antenna to the terminal block of the base receiver. The antenna terminal is the furthest away from the power socket. The receiver should be situated away from other electrical appliances and large metallic objects including mirrors. Plug in and switch on.

**If you have any queries at all please don't hesitate to contact us:**

**Tel: 01904 295250**  
**enquiries@parabeam.co.uk**  
**www.parabeam.co.uk**